

CLICWALL WALL SYSTEM

For your hotel, office, retail space,
school or modular project



FITNESS



The image features a white background with three lines of text centered horizontally. On the far left and far right edges, there are vertical panels showing a row of blue school lockers. Each locker has a silver handle and a small red and white lock. The lockers are set against a dark brown wall, and a light-colored wooden floor is visible at the bottom of the panels.

Want to renovate your
retail project 4x faster?

Design future-proof
office spaces?

Create the perfect
atmosphere in your hotel?



OF256 / M02
CLICWALL
LIME EARTH BAKED



Finish your project up to 4x faster

Clicwall works similar to same as plasterboard – except it's better.

Simply place the wall-high Clicwall on the structure, click the panels together seamlessly and that's it.



- The **panels click together easily**, so you never have to grout, putty or sand again.
- Clicwall has your **preferred finish**, so you won't have to spend time painting or wallpapering ever again.

We don't need to tell you how much you'll save in costs. It's time to start dreaming of your favourite finish for your walls. But there's more. Clicwall not only offers countless benefits to your project, it's also good for the planet.



Immediately finished in style

Want to give the guests in your hotel an unforgettable stay?
Clicwall gives you the inspiration to **create the atmosphere you desire.**

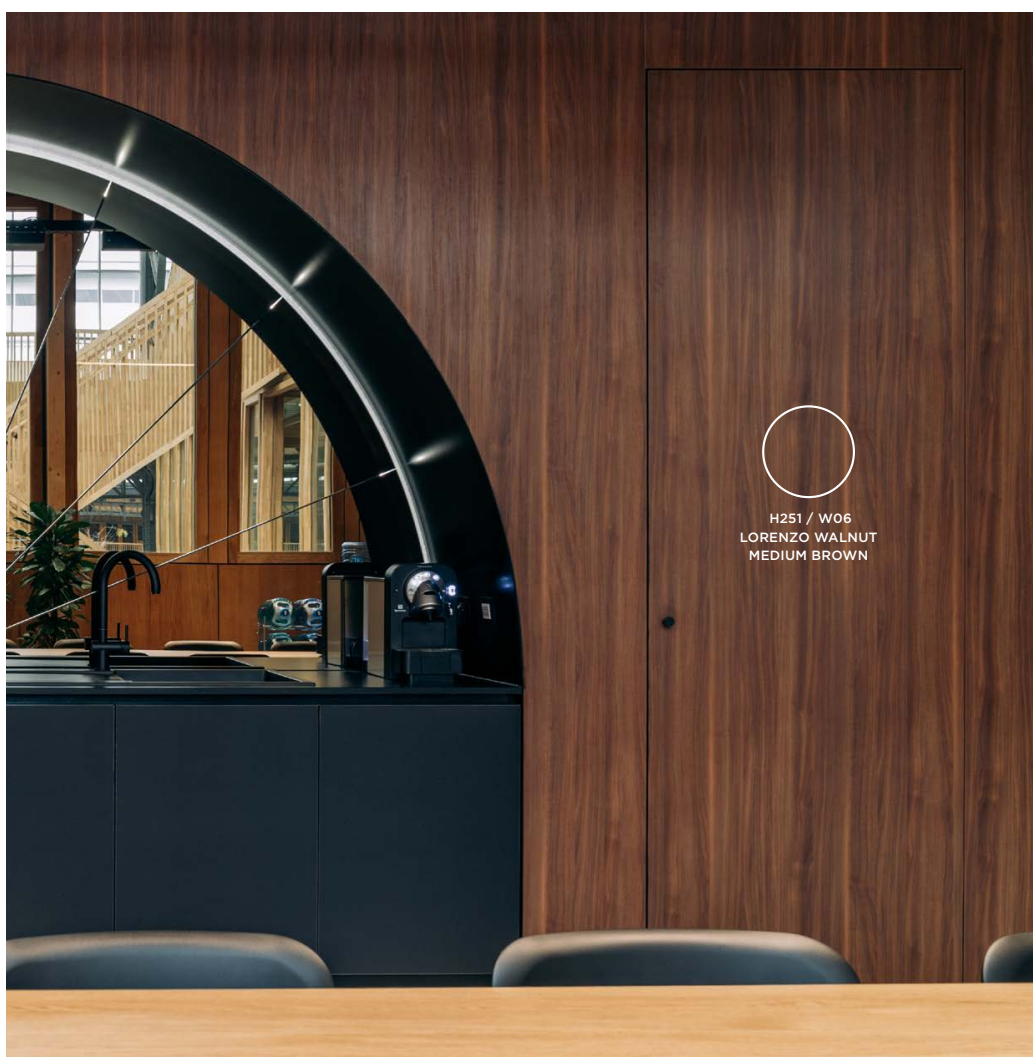
- Uni colours: from classic white and dusty coral to exotic blue and elegant black
- Wood look: from warm walnut to mellow oak
- Stone look: from chalk to marble and industrial concrete
- Textile look

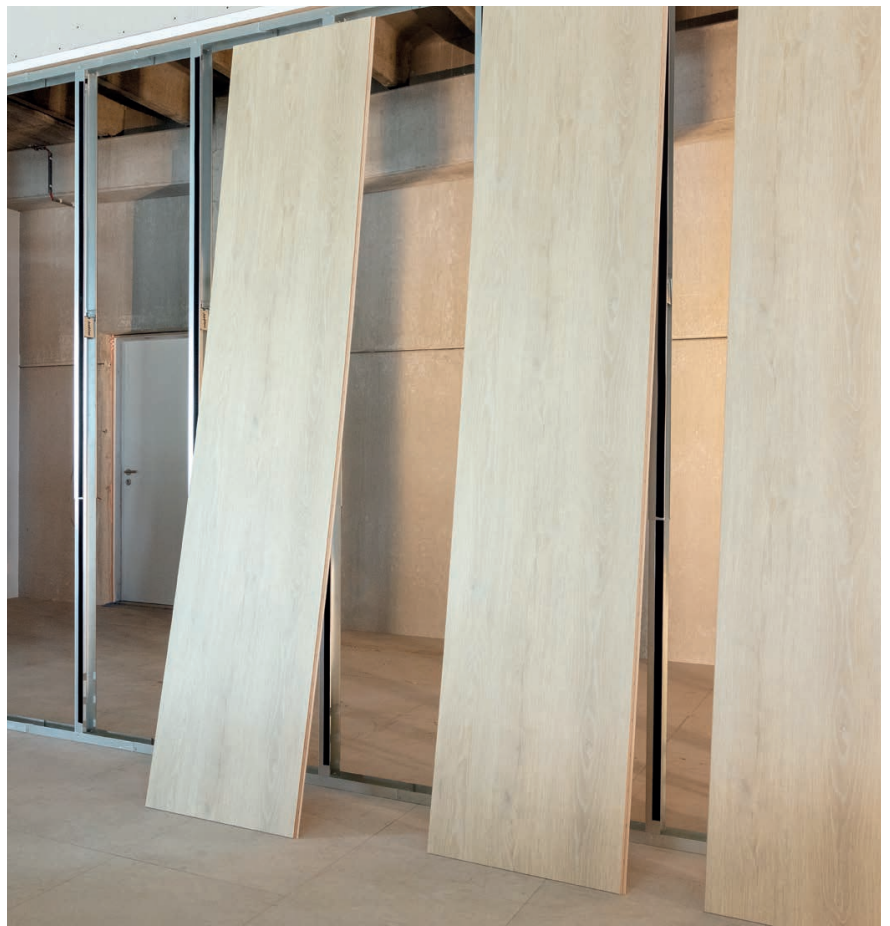
Discover the
complete Unilin
Decorative Range:



The patented Uniclic system makes it seem as though the panels **are connected seamlessly** to each other. This is the perfect way to create beautifully streamlined spaces with no seams or joints to disrupt the picture.

Looking for a total concept? From walls to doors, cupboards, cabinets and tables. Everything is possible in **full design match** in melamine, HPL for furniture & doors and edging tape.





Meeting all your technical requirements

Need a moisture-resistant alternative for the bathrooms of your modular holiday cabins? Or do you want a veneer wall in your office that meets fire class B?

Clicwall is available

- in panels with a **moisture-resistant core (Clicwall MR)**
- in panels with a **fire-retardant core (Clicwall FR)**

Or are you looking for an **acoustic insulation system** to serve as sound insulation between two hotel rooms? Or an E160 wall that prevents fire from spreading between two classrooms?



Discover the different wall systems online:

Clicwall
system selector

A sustainable alternative to traditional wall coverings

Impact and stain-resistant

Your project will look great even years after renovation. Clicwall wall panels are **easy to clean and up to four times more scratch & impact-resistant (20N)** than traditional types of wall cladding such as plasterboard (5N).

Fully dismantlable and reusable

Retail customers who regularly want to renovate based on a new concept need a wall solution that can be dismantled in full. Thanks to the click system, Clicwall panels can be **reused up to 10 times**.

Certification



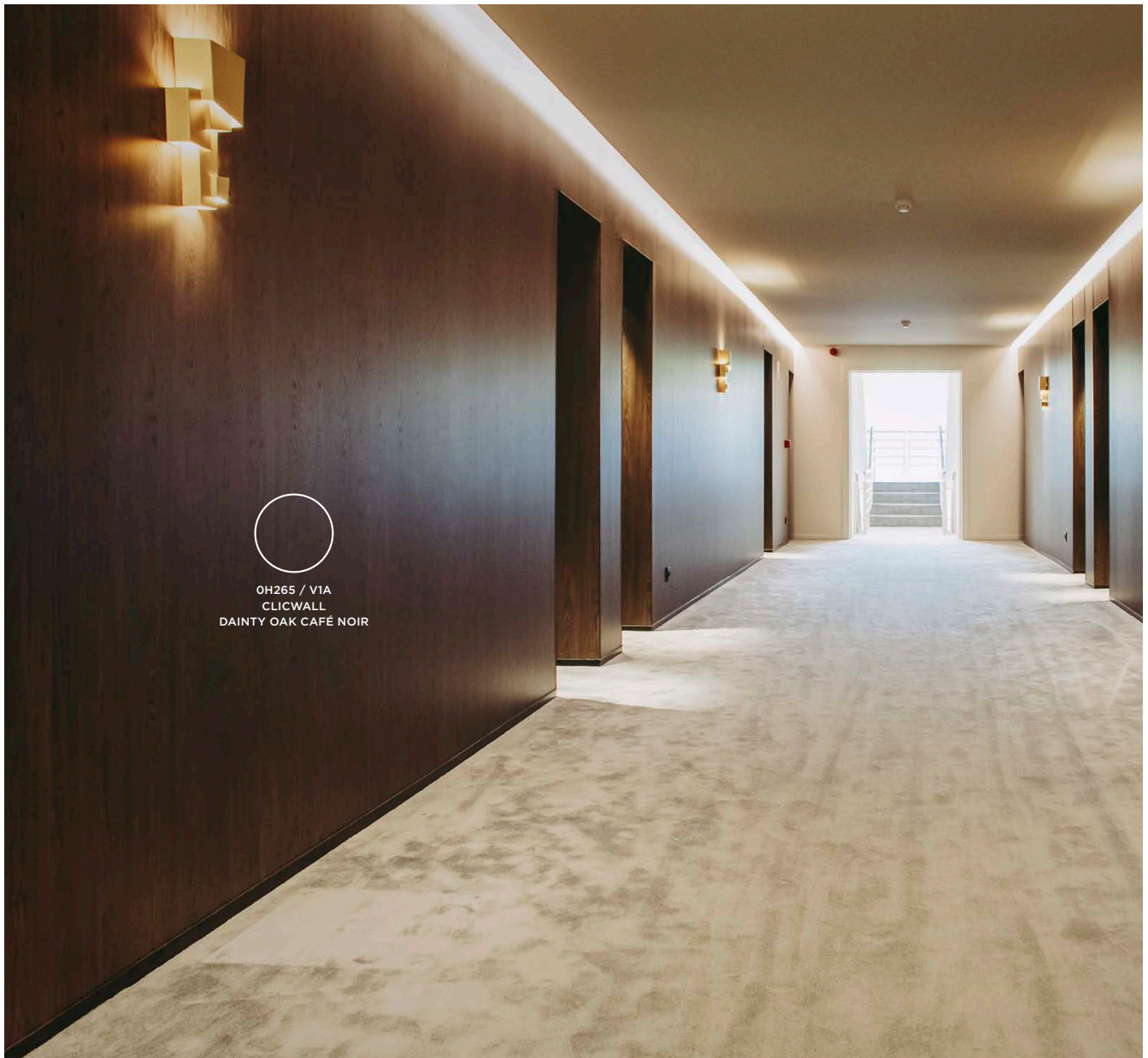
100% wood

Did you know that wood is the most **sustainable building material** according to the construction material pyramid? Why? It retains CO₂ and is renewable.

100% recovered wood

We do not fell even a single tree specifically for our wood production. Instead, Clicwall is made from **100% recovered wood**. Our MDF wood mix – on which Clicwall is based – will contain 25% recycled fibres by 2030. Unique in the world.

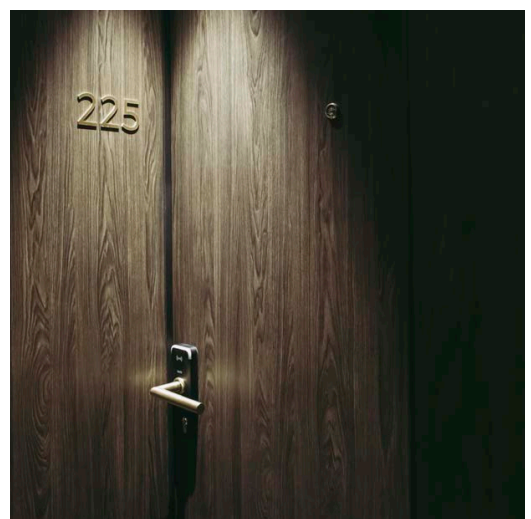




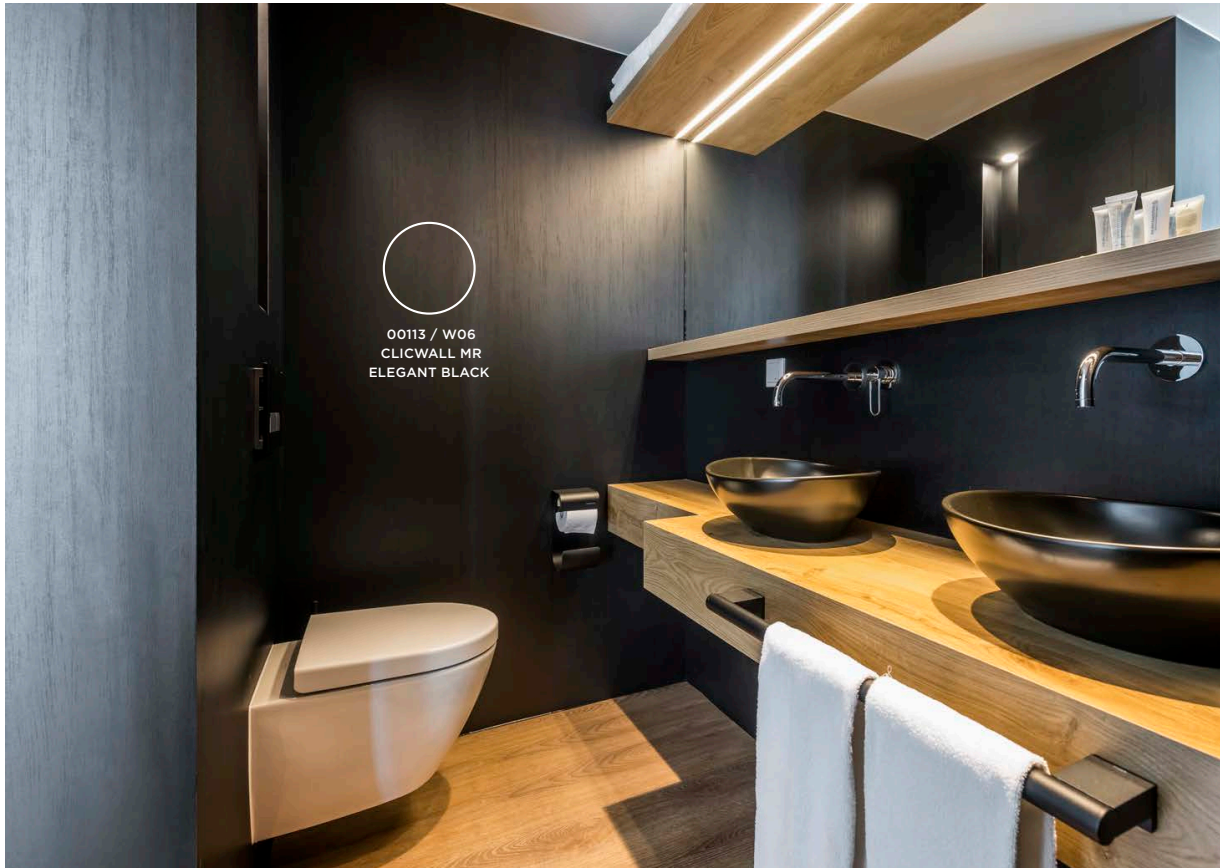
Hotel

A linen cart crashed into the wall? No problem. Clicwall has an impact resistance of up to 20N: that's **four times stronger than plasterboard**.

Has a suitcase left a black mark on the wall? With a wet cloth and an all-purpose cleaner, it'll be gone in no time.



Dainty Oak café noir (OH265/V1A) dazzles in the Astoria Hotel - available in Clicwall, melamine and HPL.



Want to extend the look and feel of your hotel to the bathroom? The MDF substrate of Clicwall is also available in a **moisture-resistant variant (MR)**.

Need a suitable response to a possible fire in a corridor? Choose Clicwall in a **fire-retardant version (B-s1,d0/B-s2,d0)**. Fire-retardant **E130/EI60 setups** are available for partitions between rooms.

Want to reduce ambient sound between hotel rooms? The Clicwall systems also provide **increased acoustic comfort** in the proper configuration.

Retail

Is the opening of your retail project just around the corner? Rapid installation is guaranteed thanks to the **patented Clicwall click system**. Meanwhile, the decorative top layer of Clicwall means there is no need for any further finishing, such as painting or wallpapering.

Does your customer want to keep part of the store open during the renovation work? No problem! Clicwall can be installed **dry and dust-free**, which minimises inconvenience for your customers.





KFC created a typical US-American country-like atmosphere by milling vertical grooves in the black coloured core Clicwall panels.

Want to create stylish boutiques so you can give your customers an unforgettable shopping experience? The Uniclic system makes it seem as though the panels are **connected seamlessly to each other**. Disruptive seams that catch the eye are now a thing of the past.

Your project is **guaranteed to have a consistent overall appearance**. Mix or match with the Unilin Decorative Range: from walls to doors, tables, and countertops. Everything can be matched in melamine, HPL for furniture & HPL in door format and edging tape.



OF976 / BST
GRANULO

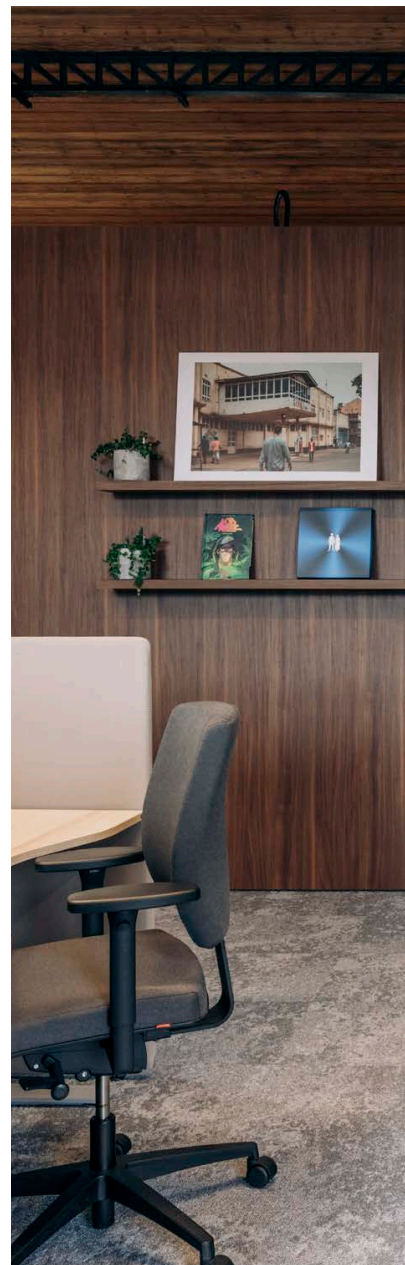
Want to add a more personal touch? **Personalise your retention and partition walls** with your logo, a unique tiled structure or an atmospheric photo with our digital print service. The options are endless.

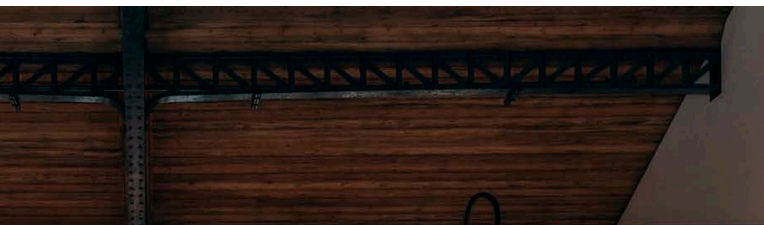
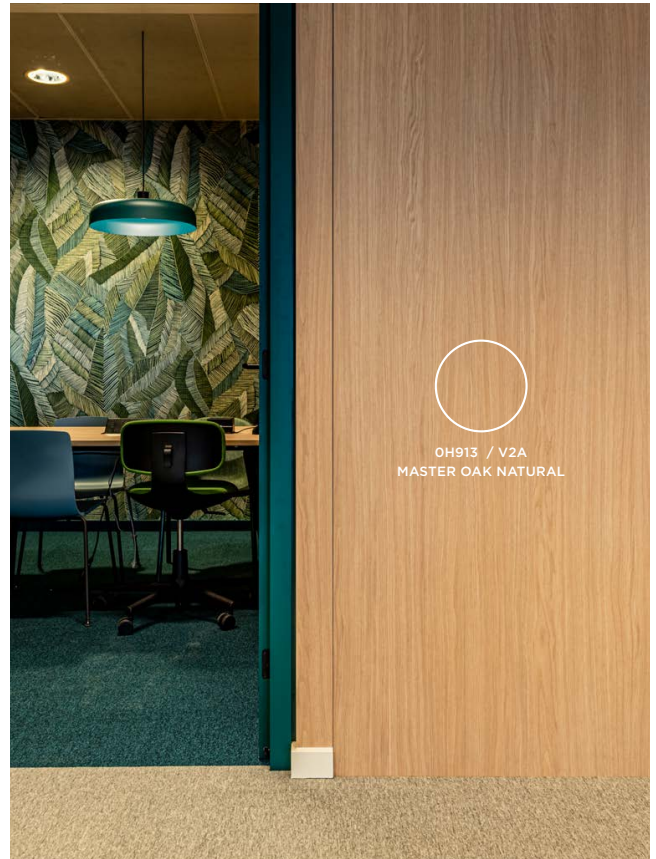


Office

Noise outside a meeting room or colleagues making frequent calls can often make it difficult for employees to concentrate. Thanks to the **acoustic configurations** of our Clicwall wall systems, this problem is a thing of the past.

Looking to integrate a veneer wall into your hallway, but want an option that offers **B fire certification**? Our Clicwall expert is happy to draft exactly the right system for you.





There is an extra dimension to the offices at Universal Music Studio (left) and OTA Insight (top): this Clicwall is C2C Certified Material Health™ certified.

Did you know that wood is one of the most sustainable building materials around? Unilin consciously selects **recovered wood** to produce high-quality MDF. Part of the wood mix even consists of recycled MDF fibres – a world first.

Want to go beyond recycling and reuse materials instead? The click system makes it **easy to dismantle Clicwall panels and install them again up to 10 times.**



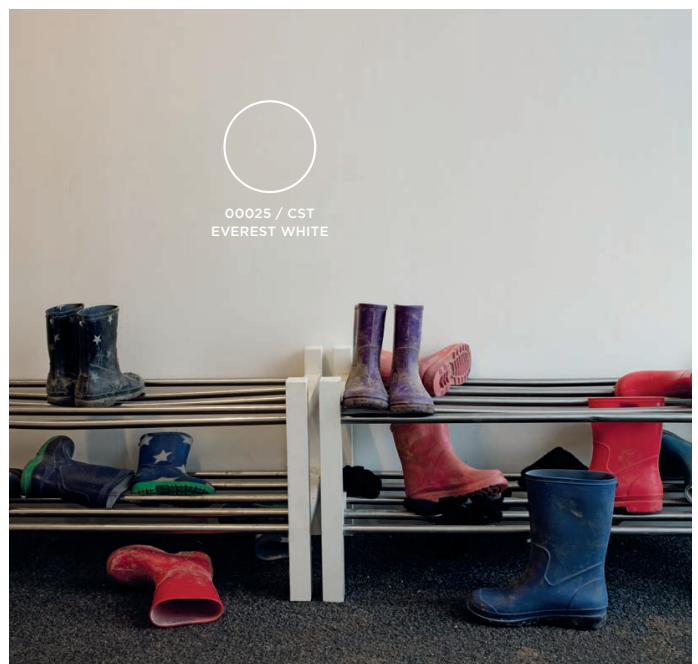
Education

Want to give your pupils every chance to concentrate? An **acoustic set-up** of the Clicwall wall system is the best way to create a quiet space in no time.

It is essential to have sufficient time to limit damage and evacuate pupils in the event of fire. Clicwall is available in a **fire-retardant version (B-s1,d0/ B-s2,d0)** to provide a better response against fire in corridors. **EI30/EI60 configurations** can be used as fire-retardant dividing walls.

Spaces such as corridors and gyms are subject to multiple shocks on a daily basis. The melamine layer of Clicwall makes it up to **four times more scratch-resistant and impact-resistant than painted alternatives.**

Found a black mark or a handprint on the wall? No problem! Clicwall is also **easy to clean.** All it takes is a damp cloth and a spritz of all-purpose cleaning agent and it'll be sparkling again in no time.



Clicwall is highly wear-resistant, making it ideal for when pupils start to get a little too creative in art class.



Health care sector

Corridors and rooms with a near-constant stream of beds, carts and wheelchairs need to be able to take a bump from time to time. This is where Clicwall comes in. The panels are **four times more resistant than plasterboard**, with an impact resistance of up to 20N.

The surface is also **dirt-resistant, easy to clean and antibacterial**. This makes Clicwall the ideal product for heavily used environments, such as nurseries, care installations and public spaces.



In a fire, every minute counts! Once correctly installed, the Clicwall wall system is guaranteed to be **fire-resistant for 30 to 60 minutes (EI30/E60)**. This leaves enough time to limit damage and evacuate residents.

Want to dampen sound between rooms as much as possible? The Clicwall systems also have options that increase **acoustic comfort**.



Clicwall fire-retardant panels with a 'B' classification at a residential care centre in Zoutleeuw, Belgium.

Modular construction

Seeking to **increase your efficiency in the workplace by 20%**? With Clicwall, you can skip the traditional steps required to put up drywall, such as filling seams, sanding, painting, and wallpapering.

Safety first! Do you build units with maximum safety in mind? Clicwall **fire-retardant panels (FR)** can help to prevent the spread of fire in the event of an incident. For fire-resistant partition walls, **EI30/EI60 configurations** are possible. Clicwall's MDF substrate is also available in a **moisture-resistant variant (MR)**.



00113/W06
ELEGANT BLACK



The units from BePods (Belgium) are easy to transport without the joints cracking or splitting.



Clicwall Paint allows you to finish your modules according to your customer's preferences.

Any further questions? Get in touch!

Ready to start using Clicwall, but still have a few questions before you dive in? Want to see more real-life test setups? If so, be sure to visit the Clicwall Academy, the place where inspiration, technology and expertise come together. Discover for yourself how quick, stylish and sustainable Clicwall wall systems are.

What you can expect:

- Information about fire resistance, acoustic insulation and impact resistance
- Discover the unique sustainability story & recovery programme
- Design inspiration
- Optimisation of your specific project arrangements
- Support with mock-ups
- In-depth installation advice & training for your installation experts
- On-site assistance

Book your personalised
(digital) appointment:



Alternatively,
contact us via
clicwall@unilin.com



OF599/M03
WEAVE WOOL
BEIGE



CLICWALL WALL SYSTEMS



Unilin Panels

Ingelmunstersteenweg 229
8780 Oostrozebeke
Belgium
T +32 56 66 70 21
info.panels@unilin.com
www.unilinpanels.com